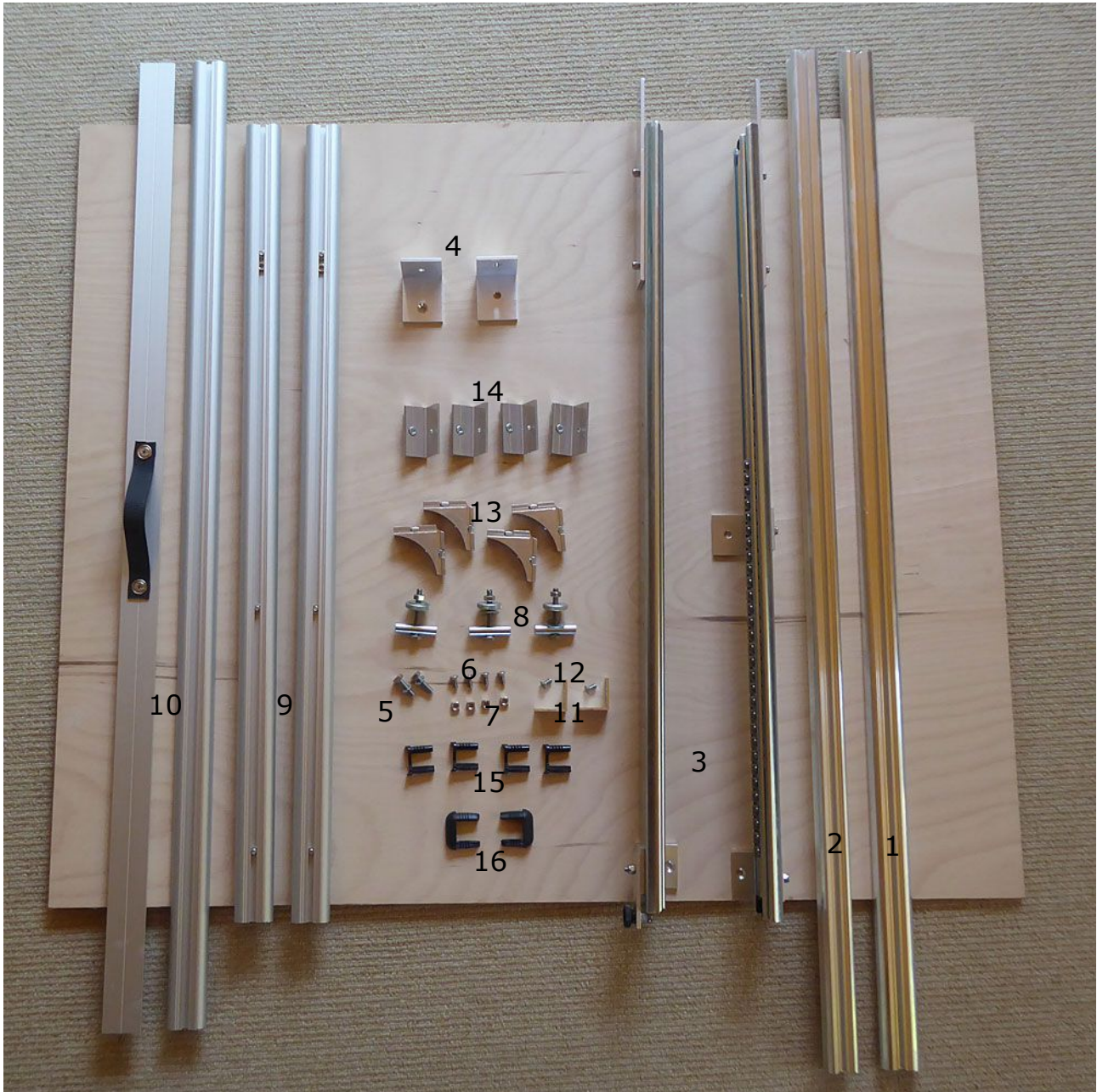


Calispace - assembly instructions Ocean and Marco Polo

Preparation:

- Lay out a sufficiently large area with cardboard (the telescopic rails are greased).
- Place the components as shown in the picture.



Tools:

- Allen key, hexagon, 4 mm (Allen wrench, IKEA key)
- Slot and Phillips screwdrivers
- Wrench (8, 10)
- folding rule
- maybe hammer.

Components basic version

Frame:

1	Säulensystemprofil	1
1	schmales Systemprofil (etwas länger als das Säulenprofil)	2
2	Teleskopschienen mit vormontierten Winkeln (1x mit Federbolzen)	3
2	Winkel vorne	4
2	Sechskantschrauben Edelstahl mit Sicherungsring, M6 x 20	5
4	Senkkopfschrauben M5 x 12	6
4	Vierkantmuttern M5	7
3	Befestigungsschrauben für Bodenschiene	8

Drawer:

2	schmales Systemprofil kurz mit montierter Schubladenschiene	9
2	schmales Systemprofil lang (1 x mit Griffschlaufe)	10
2	kleine Winkel	11
2	Senkkopfschrauben M5 x 10	12
4	Verbindungswinkel für Schublade	13
4	Befestigungsflansch für Schublade	14
4	Verbindungskappen schwarz	15
2	Endkappen schwarz	16

Different components for MarcoPolo version:

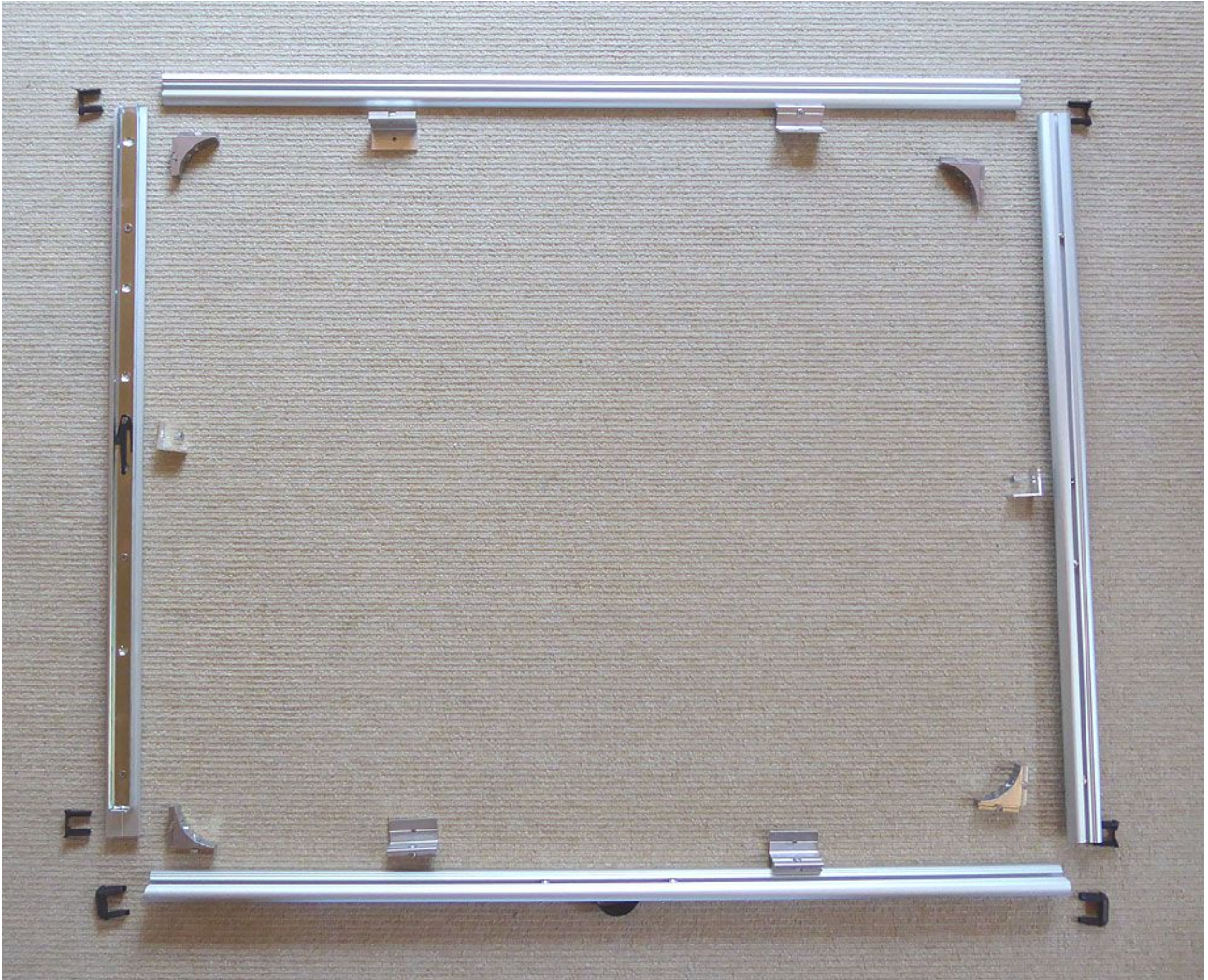
- 2 square nuts and 2 hex nuts instead of 4 square nuts
- 1 aluminum flat profile instead of narrow system profile
- Spring bolt right instead of left
- other floor fixing screws

Drawer:

The drawer consists of two short system profiles with mounted drawer guide rails and two long system profiles (one with handle loop).

Note:

- Do not tilt profiles and connection angles
- no violence, it is only with feeling!
- Slightly loosen the screws of the connection bracket beforehand
- The upper edge of the picture is seen in the direction of travel in front

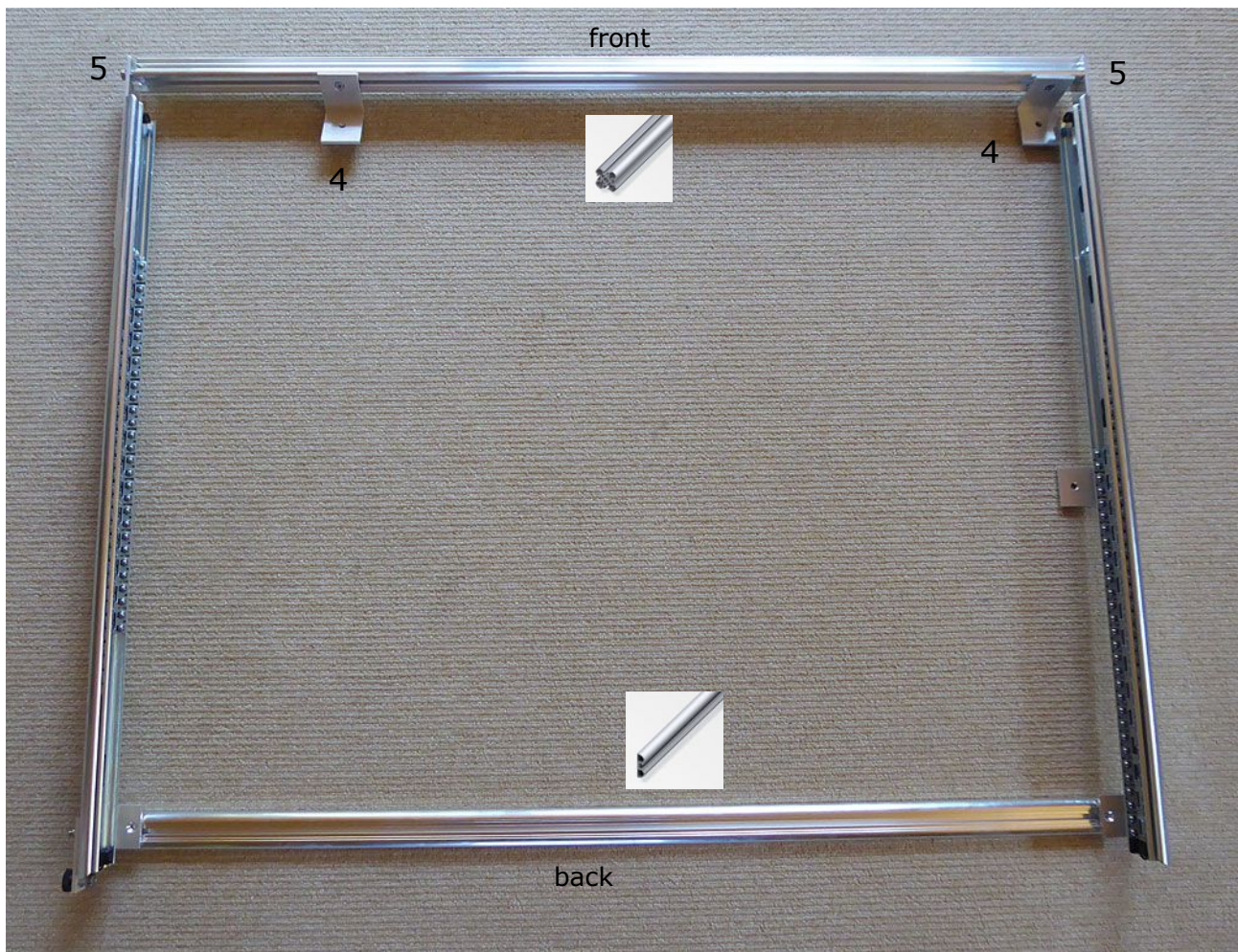


Mounting steps:

- Arrange components
- Insert the mounting flanges (**14**) before connecting (about 20 cm distance from outside)
- Insert connection caps (**15**).
- Insert connecting bracket (**13**) and tighten screws.
- Fix small angles (**11**) with countersunk screw M5 x 10 on left and right
- Insert end caps (**16**).

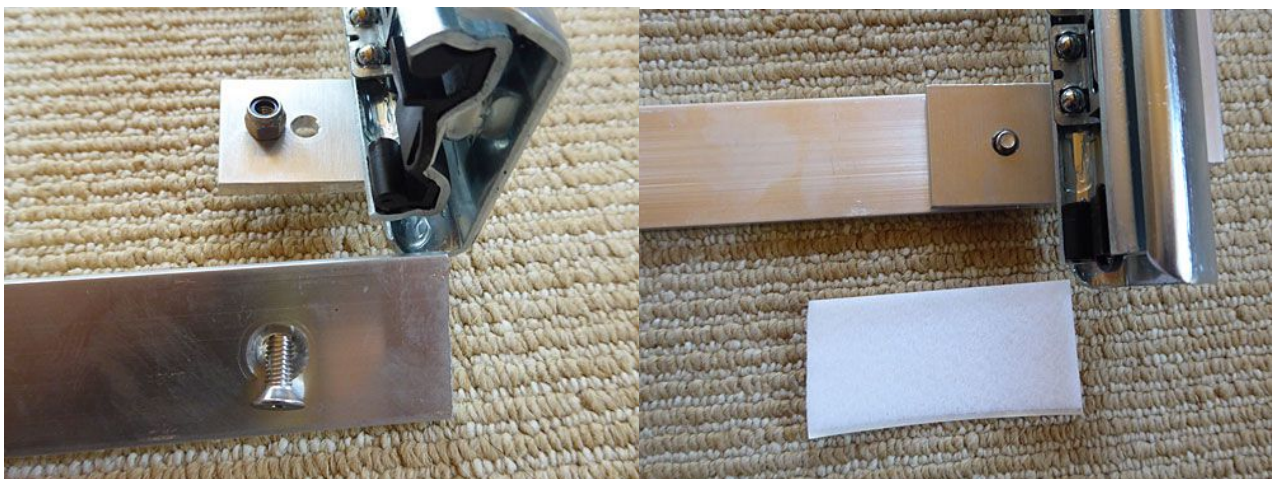
Telescopic rail frame

The information front, back, left and right are seen in the direction forward.



Mounting steps:

- Arrange components
- Loosely fasten both angles (4) to the column profile (1)
- Secure pillar profile (1) at the front with hexagon bolts (5) M6 x 20
- Attach telescopic rail to rear system profile (2) with countersunk screw M5x12 and square nut
- MarcoPolo version see Fig.



Not pictured: In the MarcoPolo version, the locking pin is on the right.

- Insert drawer.
- If necessary adjust and adjust the frame and drawer by loosening the screws.
- The ball cages should be pushed all the way to the back (towards the drawer).



Mounting drawer



[Mounting drawer\(Link\)](#)

For this, the two front angles must be solved during the first installation, so you can adjust them.

The middle bracket only serves for lateral stability. The long bracket is no longer included. The vertical forces are intercepted by the front and rear profile.

Illustration shows an older model with center profile.

Installation instructions:



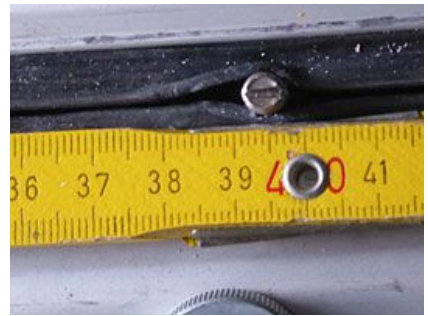
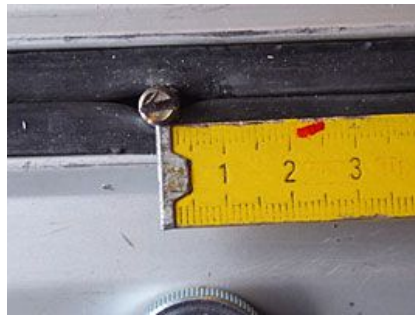
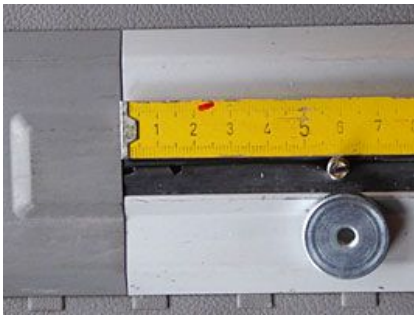
The drawer is unlocked on the sides (left and right opposite) and can be pulled out completely.



The rear seat bench must be advanced approx. 4 cm. When Marco Polo, the bed extension must be used.



[Inserting the mounting screws \(please click\).](#)*



Dimensions are indicative

*

The nut bolt must be screwed hand-tight and the knurled nut screwed approx. 1 cm. The screw is then countersunk in the rail and placed in the **left-hand** position and pulled upwards. Then the knurled nut is screwed down by hand. Now the bolt can be screwed in to the right until it is fixed. Finally, the knurled nut is unscrewed.

After approx. 500 km, all screw connections should be tightened.